



16Tx / 16Rx Direct L-/S-/C-Band Sampled Phased-Array Platform

Targeted to quickly enable customer demonstrators within the A&D market, ADI demos a multi-purpose 16-channel phased-array radar, EW and satcom platform based on four of the newly-released AD9081 MxFE ICs.

Analog Devices
<https://bit.ly/37ZPGov>



Enabling High Performance, Cost-Effective Satcom Connectivity

Anokiwave enables satcom OEMs to realize their potential with high performance, cost-effective Si IC solutions for active antennas that are available in high volume now.

Anokiwave
<https://r99ud.app.goo.gl/GoWC>



Telecommunication Testing on Relevant RF Components

This resource reviews how the air interface layer has changed throughout this digital evolution and explains how systems often need to be upgraded to meet the new criteria.

AR RF / Microwave Instrumentation
<https://bit.ly/3Ihzlrt>



Designed for Extreme Vibration

Delta's threaded SMP-T, SMPM-T and SMP3-T have been added to their website. Designed for hypersonic, airborne and space launch applications, with board-to-cable and cable-to-cable mechanical schemes, designed in Delta's robust, low profile solutions.

Delta RF
www.deltarf.com



Frequency Synthesizers for Quantum Computing & More

GeoSync updated their website to include an array of 1 to 18 GHz synthesizers, 16 total, all in a 1 RU rack. See the GS50 data sheet online.

GeoSync Microwave
www.geosyncmicrowave.com



POWERFUL TOGETHER Brand Family

The POWERFUL TOGETHER brand family now includes INRCORE, Gowanda Electronics, TTE Filters, DYCO Electronics, RCD Components and Bicon Electronics. Learn more about high performance power and signal components from each brand/company at this new webpage. Visit us at IMS booth 3058.

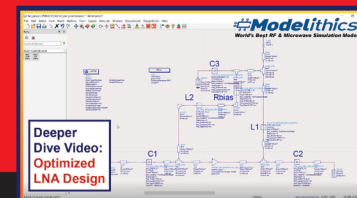
INRCORE
www.inrcore.com/brands



Modelithics Deeper Dive: Optimized LNA Design

This new video demonstrates how designers can optimize the noise figure performance of designs that feature a MMIC low noise amplifier using Modelithics models.

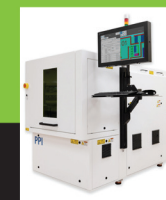
Modelithics
www.youtube.com/watch?v=CtzPU79wHhk



Advanced Automation for Laser Resistor Trimmer Systems

PPI continues to add to the available automation options for the RapiTrim laser resistor trimmer systems. Standard stack loaders and magazine handlers can be customized to suit any requirement.

PPI Systems
www.ppisystems.com/blog



Miniature Rb Atomic Clock Improves Military Communications Performance

This document describes how the use of the mRO-50 addresses problems that can be seen on ground or mobile platforms using the LTE waveforms as example.

Orolia
<https://bit.ly/3KbxQx5>



What do MSL Ratings Mean?

A Moisture Sensitivity Level (MSL) indicates the amount of time a moisture-sensitive device can be exposed to ambient conditions prior to reflow. Learn more here.

RFMW
<https://rfmwblog.com/2022/02/14/what-do-msl-ratings-mean/>



The Lowest Dielectric Loss In the Industry

With $D_f = 0.0006$, ceramic-filled PTFE and $D_k = 2.5$ at 2.4 GHz, WavePro® makes it possible with a made-to-order, high performance dielectric. Visit the all-new website to learn more and request a sample kit for prototyping.

WavePro®
WaveProAntenna.com



Rethink 5G Testing

Designed to make 5G testing as simple and straightforward as never before, the R&S CMX500 enables even complex test setups for all 5G NR deployments, supporting a large variety of the present and future 3GPP band combinations, all in a single box.

Rohde & Schwarz
rohde-schwarz.com/rethink5Gtesting

