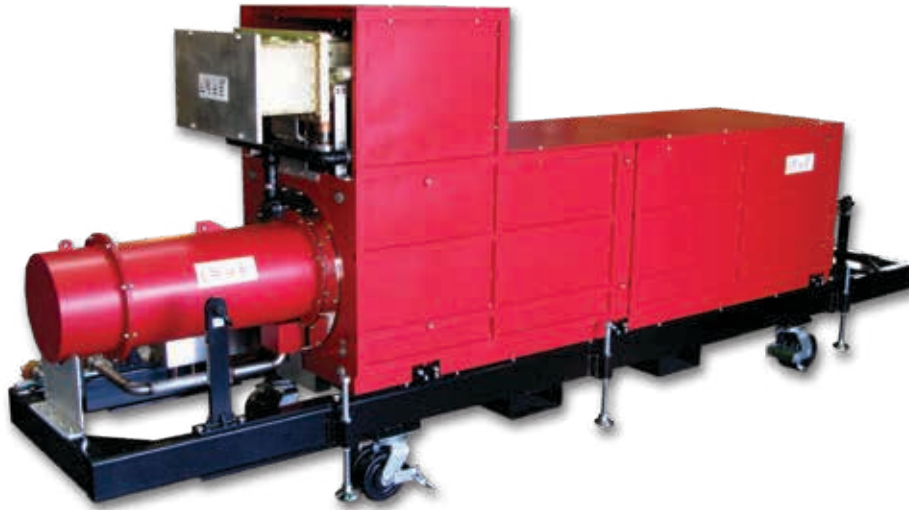


## Communications & Power Industries Klystrons



Pulsed klystron operating at 352 MHz , 2.8 MW peak, 100 kW (7.3 kW for B model) average power. Electromagnet focused, liquid cooled. Waveguide output WR-2300.

### Typical Operating Parameters

Beam voltage	110 kV
Beam current	50 A
Frequency	352 MHz
Peak power	2.8 MW
Average power	100(7.3) kW(B)
Saturated gain	42 dB
Efficiency	46%
Duty	4.5(0.32)%(B)

### FEATURES:

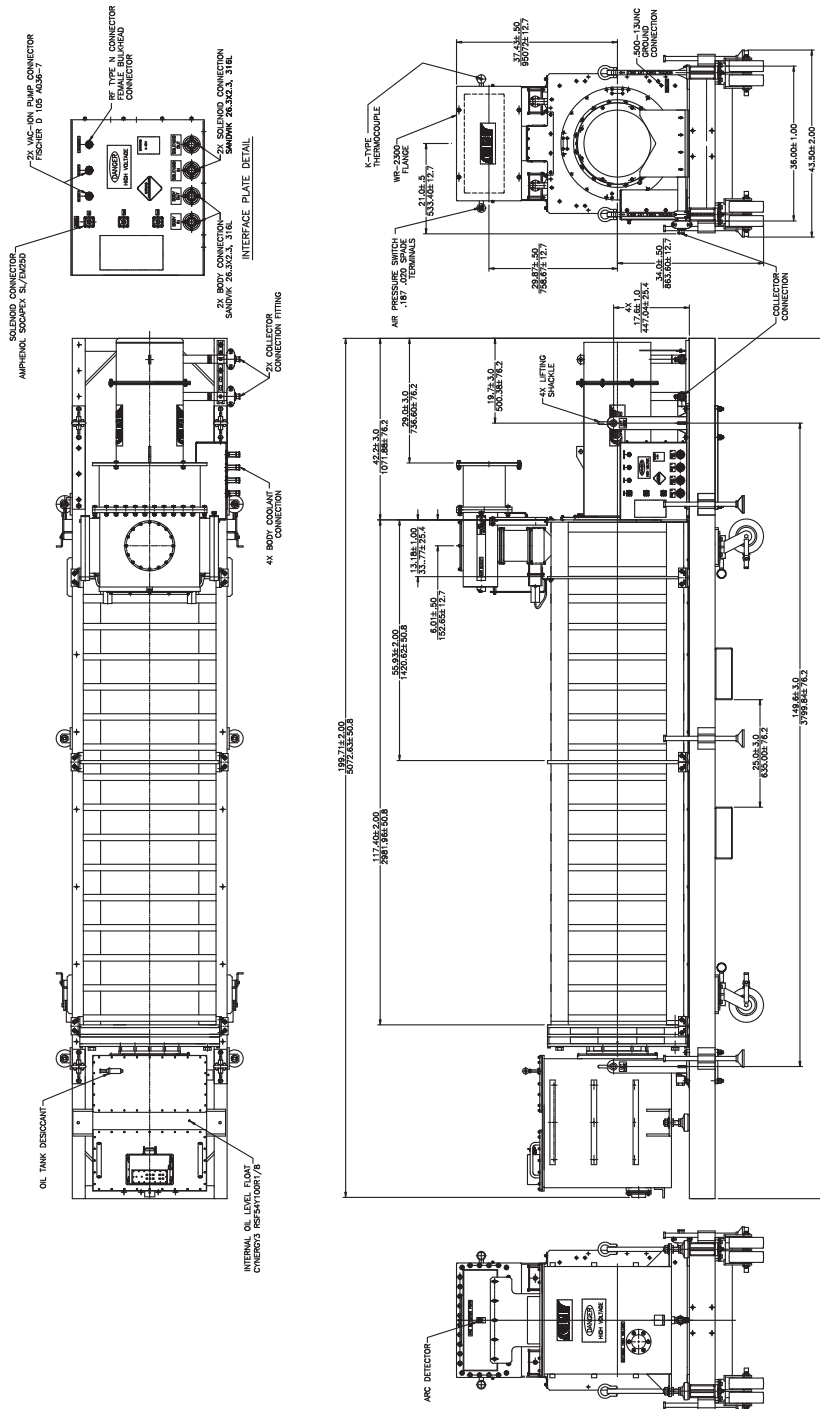
- Integral focusing electromagnet
- X-ray shielding included
- Oil insulated gun, oil tank included
- Installation support available

### BENEFITS:

- High reliability & efficiency
- Proven long life designs
- Customizable models for your application

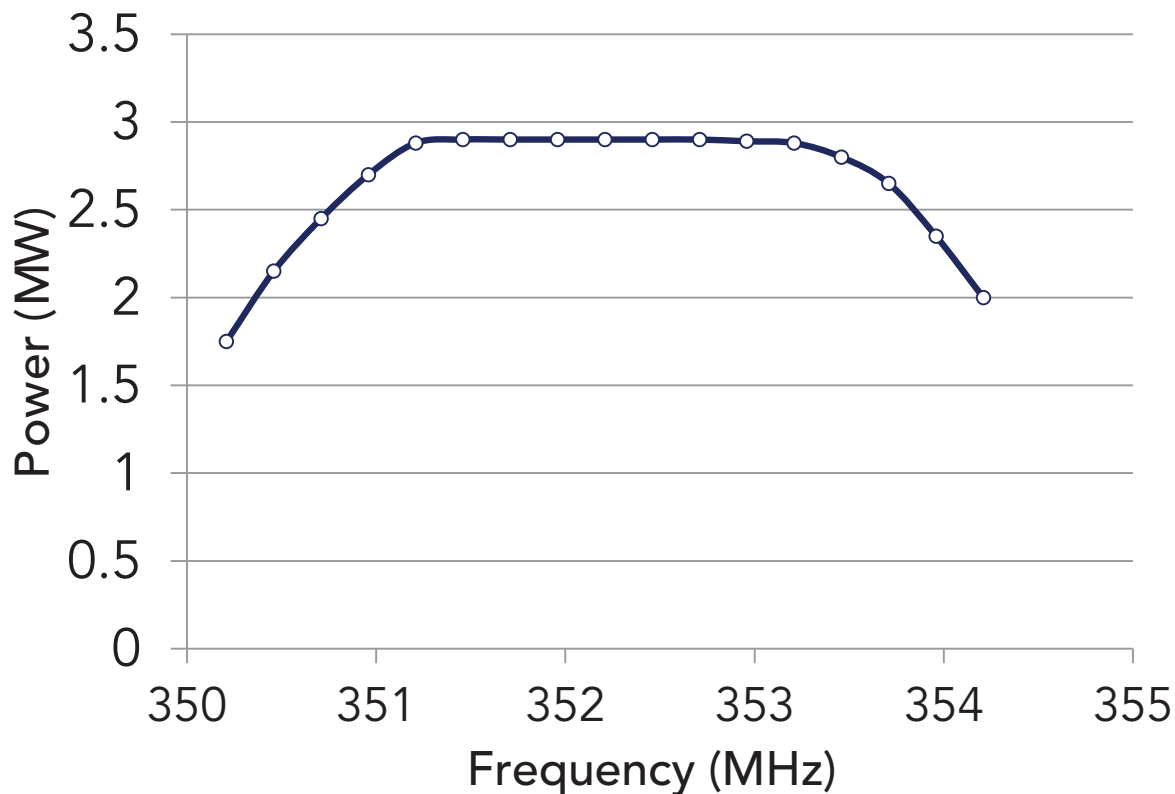
### APPLICATIONS:

- Particle Accelerator



# CPI 100 kW UHF-Band Pulsed Klystrons: VKP-8352A/B

## VKP -8352A Peak Power Output



With a history of producing high quality products, we can help you with your klystron.

Contact us at [MPPMarketing@cpii.com](mailto:MPPMarketing@cpii.com) or call us at +1 650-846-2800. The data should be used for basic information only

Formal, controlled specifications may be obtained from CPI for use in equipment design.



**Microwave Power  
Products Division**  
811 Hansen Way  
Palo Alto, California  
USA 94304

tel +1 650-846-2800  
fax +1 650-856-0705  
email [MPPMarketing@cpii.com](mailto:MPPMarketing@cpii.com)  
web [www.cpii.com/MPP](http://www.cpii.com/MPP)

For more detailed information, please refer to the corresponding CPI technical description if one has been published, or contact CPI. Specifications may change without notice as a result of additional data or product refinement. Please contact CPI before using this information for system design.

©2020 Communications & Power Industries LLC. Company proprietary; use and reproduction is strictly prohibited without written authorization from CPI.